

**30X60cm**

wall Series

Vitrified Body  
Wall Tiles



# GVT (MATT)

30x60cm



9011-LT



9011-DK



# GVT (MATT)

30x60cm



9015-LT



9015-DK



# GVT (MATT)

30x60cm



9026-LT



9026-DK



# GVT (MATT)

30x60cm



9027-LT

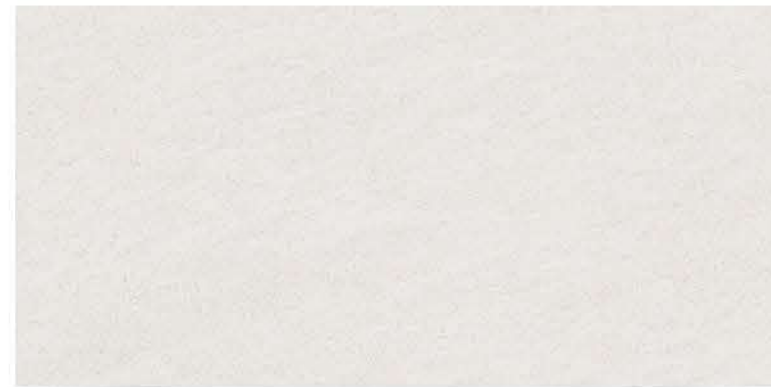


9027-DK



# GVT (MATT)

30x60cm



9031-LT



9031-DK



# GVT (MATT)

30x60cm



9037-LT



9037-WAVE-HL-A



9037-WAVE-HL-B



9037-DK



# GVT (MATT)

30x60cm



9038-LT



9038-WAVE-HL-A



9038-WAVE-HL-B



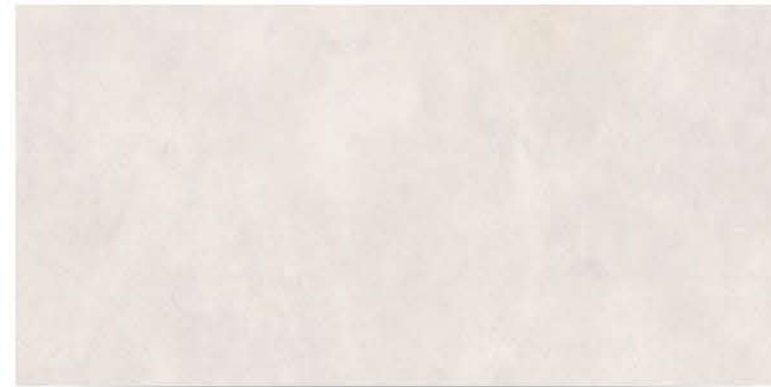
9038-DK





# GVT (MATT)

30x60cm



9039-LT



9039-WAVE-HL-A



9039-WAVE-HL-B



9039-DK



# GVT (MATT)

30x60cm



9040-LT



9040-WAVE-HL-A



9040-WAVE-HL-B



9040-DK



# GVT (MATT)

30x60cm



9041-LT



9041-WAVE-HL-A



9041-WAVE-HL-B



9041-DK



# GVT (MATT)

30x60cm



9042-LT



9042-DK



# GVT (MATT)

30x60cm



9043-LT



9043-DK



# GVT (MATT)

30x60cm



9043-LT



9044-DK



# GVT (MATT)

30x60cm



9045-LT



9045-DK



# GVT (MATT)

30x60cm



9046-LT



9046-DK





# GVT (MATT)

30x60cm



9047-LT



9047-DK



# GVT (MATT)

30x60cm



9048-LT



9048-DK



# GVT (MATT)

30x60cm



9049-LT



9049-DK



# GVT (MATT)

30x60cm



9050-LT



9050-DK



# GVT (MATT)

30x60cm



9051-LT



9051-DK



# GVT (MATT)

30x60cm



9052-LT

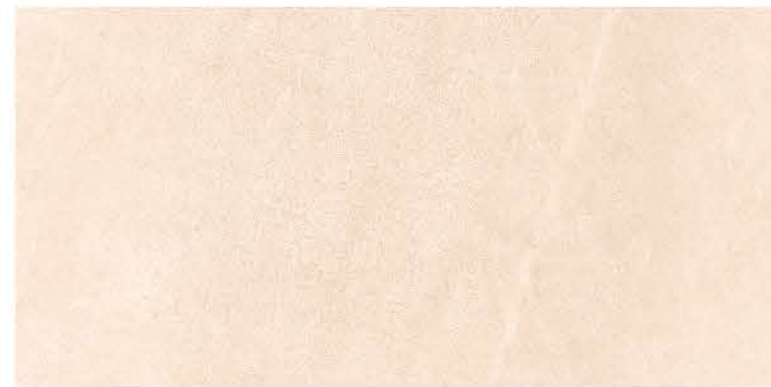


9052-DK



# GVT (MATT)

30x60cm



9053-LT



9053-DK



# GVT (MATT)

30x60cm



9054-LT



9054-DK





# GVT (MATT)

30x60cm



9055-LT

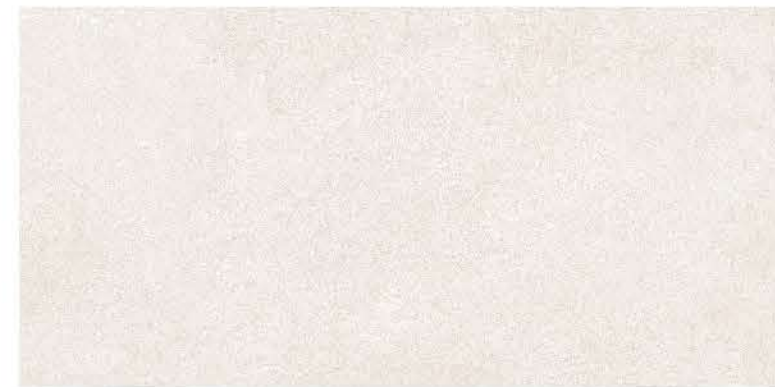


9055-DK



# GVT (MATT)

30x60cm



9056-LT



9056-DK



# GVT (MATT)

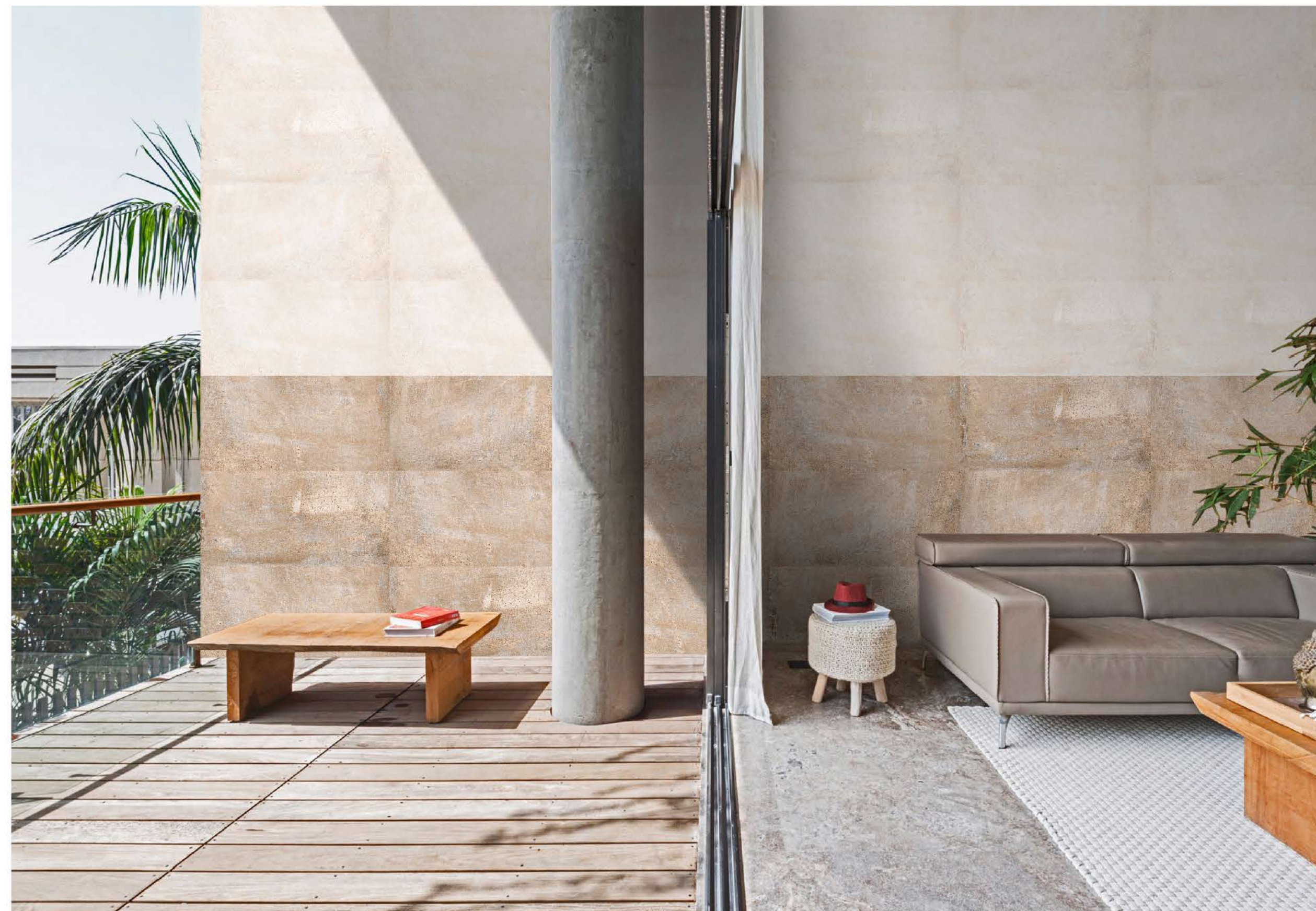
30x60cm



9057-LT

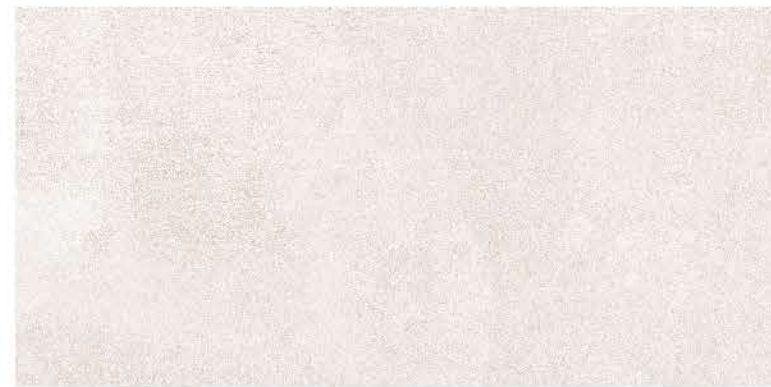


9057-DK



# GVT (MATT)

30x60cm



9058-LT



9058-DK



# GVT (MATT)

30x60cm



9059-LT



9059-DK



# GVT (MATT)

30x60cm



9060-LT



9060-DK



# GVT (MATT)

30x60cm



9061-LT



9061-DK



# GVT (MATT)

30x60cm



9062-LT



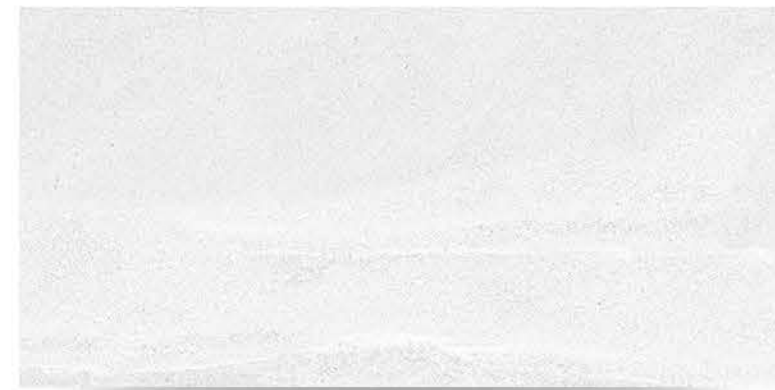
9062-DK





# GVT (MATT)

30x60cm



9063-LT



9063-DK



# GVT (MATT)

30x60cm



9064-LT



9064-DK

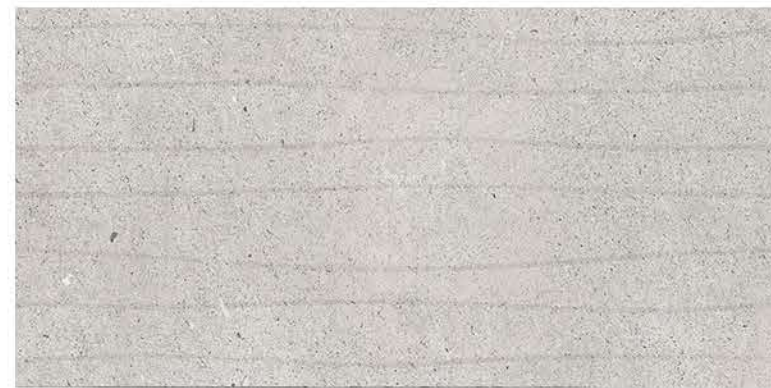


# GVT (MATT)

30x60cm



9065-DK

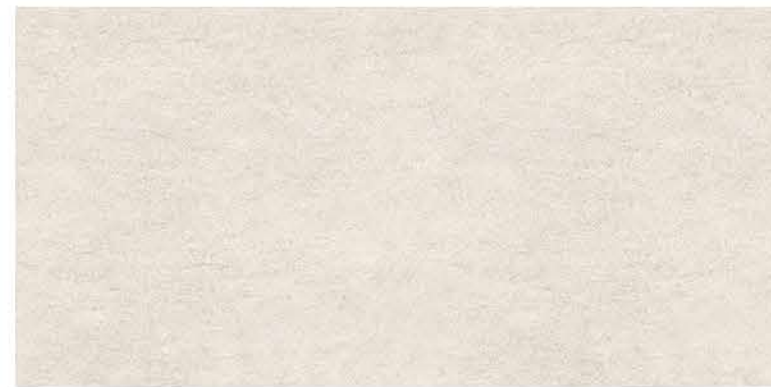


9065-HL



# GVT (MATT)

30x60cm



9067-LT



9067-DK



# GVT (MATT)

30x60cm



9068-LT



9068-DK



# GVT (MATT)

30x60cm



9069-LT



9069-DK



# GVT (MATT)

30x60cm



9070-LT



9070-DK



# GVT (MATT)

30x60cm



9071-LT



9071-DK





# GVT (MATT)

30x60cm



9072-LT



9072-DK



# GVT (MATT)

30x60cm



9073



# GVT (MATT)

30x60cm



9074



# GVT (MATT)

30x60cm



9075

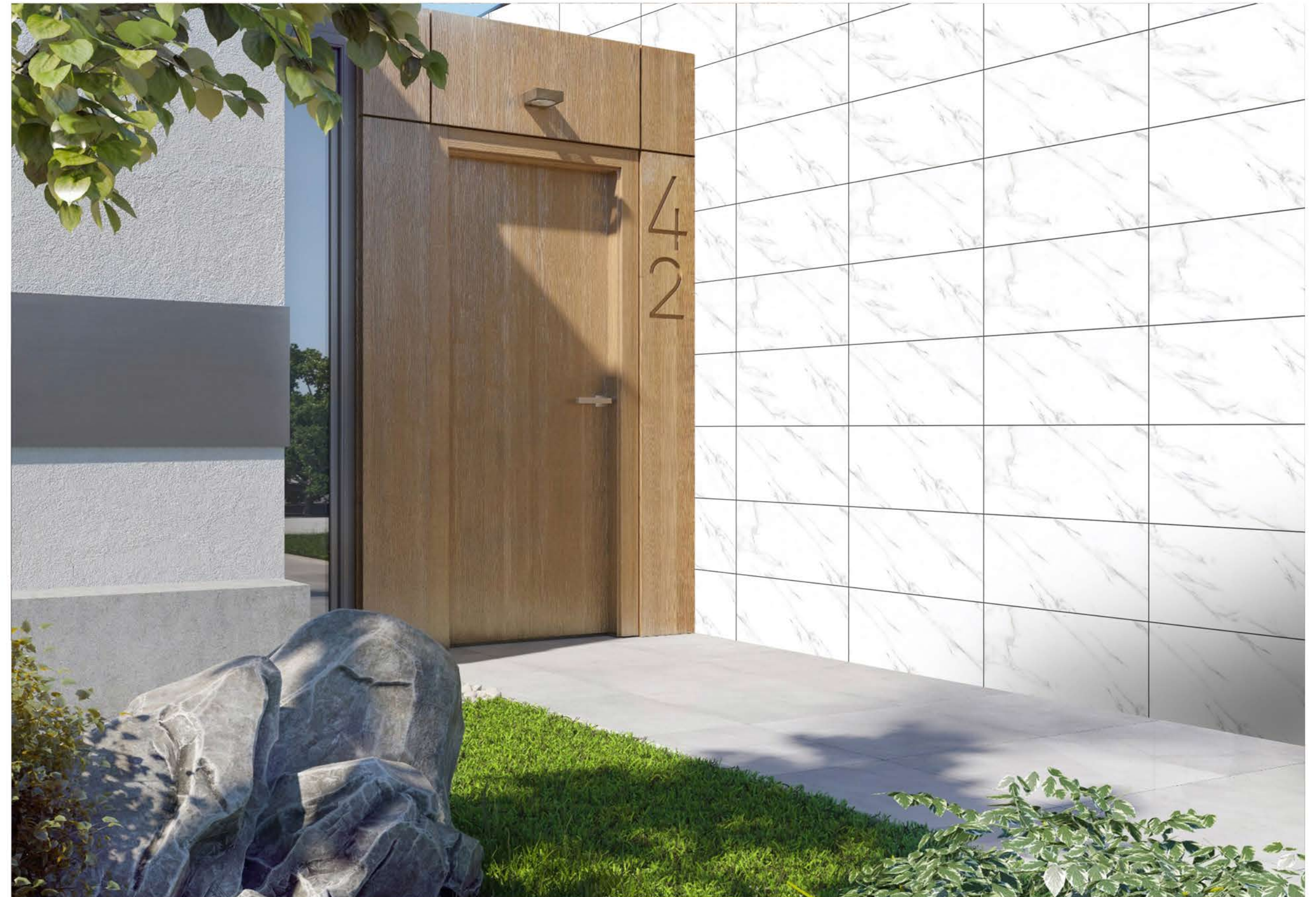


# GVT (MATT)

30x60cm



9076



# GVT (MATT)

30x60cm



9077



# GVT (MATT)

30x60cm



9078



PACKING DETAILS

S.No.	Dimensions (mm)	No. of Tiles/ Box	Coverage Area
1.	300x600	06	1.08 sq. m.

TECHNICAL SPECIFICATIONS

S.No.	Property	Group B1a-ISO 13006 Annx. G.	Our Value	Test According to
1.	Deviation in length	± 0.6%	± 0.1%	ISO 10545-2
2.	Deviation in thickness	± 5%	± 4%	ISO 10545-2
3.	Straightness of sides	± 0.5%	± 0.1%	ISO 10545-2
4.	Rectangularity	± 0.6%	± 0.1%	ISO 10545-2
5.	Surface flatness	± 0.5%	± 0.15%	ISO 10545-2
6.	Surface quality (%)	A minimum of 95% of the tiles shall be free from visible defects that would impair the appearance of a major area of tile.	98% free from visible defects	ISO 10545-2
7.	Modulus of rupture	> 35 N/mm <sup>3</sup>	40 N/mm <sup>2</sup>	ISO 10545-4
8.	Breaking strength	> 1300 N	> 2000 N	ISO 10545-4
9.	Water absorption	< 0.5%	< 0.08%	ISO 10545-3
10.	Stain resistance	Stain proof	Stain proof	ISO 10545-14
11.	Chemical resistance	No damage	No damage	ISO 10545-13
12.	Thermal expansion	< 9 x 10 <sup>6</sup>	< 6 x 10 <sup>6</sup>	ISO 10545-8
13.	Moisture expansion	Nil	Nil	SO 10545-10
14.	Thermal shock resistance	No damage	No damage	ISO 10545-9
15.	Resistance to surface abrasion	Manufacturer to state abrasion class	PEI class 3-5	ISO 10545-7